

# TRAVEL RISK OUTLOOK 2020





# AGENDA

- Research and framework introduction
- Coronavirus disease (COVID-19) outbreak
- Highlighting predications for 2020
- Panel discussion
- Audience Q&A





# TRAVEL RISK OUTLOOK 2020





# UPDATED TRAVEL RISK MAP



## **FIVE RESEARCH PILLARS**

Travel Risk Management  
Council views

Business Resilience  
Trends Survey

Country/Region Medical  
& Security Risk Ratings

Travel Risk Incident  
Case Data

On-the-ground Medical  
and Security Intelligence



## **TEN PREDICTIONS FOR**

The year '2020' is written in large white outline font. The two zeros are replaced by a pair of black-rimmed glasses, which are part of the background image of a person looking through binoculars.



# TRAVEL RISK MANAGEMENT COUNCIL



**MARC BURROWS**  
Head of Global Mobility  
Services  
KPMG



**WILLIAM WITHAM**  
CEO  
Australia-Africa Minerals &  
Energy Group



**PAULENE CHONG**  
HR Manager  
MCC Land (S) PTE Ltd



**WARNER HUDSON**  
CEO  
H & H Health Strategies



**JUDY KUSZEWSKI**  
Chair  
Global Sustainability  
Standards Board (GRI)



**JUKKA TAKALA**  
President  
International Commission on  
Occupational Health (ICOH)



**FRANCK BARON**  
Chairman  
PARIMA



**NICK PAHL**  
CEO  
Society of Occupational  
Medicine

## **FIVE RESEARCH PILLARS**

Travel Risk Management  
Council views

Business Resilience  
Trends Survey

Country/Region Medical  
& Security Risk Ratings

Travel Risk Incident  
Case Data

On-the-ground Medical  
and Security Intelligence



## **TEN PREDICTIONS FOR**

# 2020

The background of the entire slide is a blue-tinted image of a person's face, seen from the chest up. The person is wearing dark-rimmed glasses and holding a pair of binoculars to their eyes. The large white text "2020" is superimposed over the binoculars, with the zeros being particularly large and circular, framing the person's eyes.



# TRAVEL RISK MAP





## **FIVE RESEARCH PILLARS**

Travel Risk Management  
Council views

Business Resilience  
Trends Survey

Country/Region Medical  
& Security Risk Ratings

Travel Risk Incident  
Case Data

On-the-ground Medical  
and Security Intelligence



## **TEN PREDICTIONS FOR**

# 2020



# TRAVEL RISK RESILIENCE MODEL



- Employer's role in Duty of Care provision – incl. bleisure
- Confusion over how to support Millennials & Generation Z
- High profile Duty of Care legal cases
- Start-ups and SMEs under resourced / inexperienced in how to mitigate risk

- Cybercrime / attacks
- Natural disasters, extreme weather
- Infectious diseases

- Geopolitical shifts and civil unrest
- Mental health support demands
- Physical health issues



# PANELLISTS



**JOE TABONI**  
Manager, Risk Services  
& AAMEG Board Member



**DR MICHAEL WILSON**  
Deputy Medical Director



**WILLIAM (BILL) WITHAM**  
CEO, AMMEG &  
International SOS Travel  
Risk Council Member



# TEN PREDICTIONS FOR 2020

## Prevention

- 1 **Risks borne from geopolitical shifts** will be the most important mobility challenge for businesses in 2020
- 2 **Mental health** issues will increase in importance in 2020
- 3 **Physical health:** organisations will be more proactive in safeguarding physical health in 2020

## Protection

- 4 **Cybercrime** is likely to grow and be an increasing risk to security in 2020 physical health in 2020
- 5 **Climate change** will exacerbate the occurrence of environmental disruptions in 2020
- 6 **Infectious disease outbreaks** from established and newly emerging pathogens will increase in 2020 due to multiple factors, including climate change, increasing urbanisation, diminishing vaccination coverage and security instability

## Productivity

- 7 **'Bleisure travel':** the debate whether an employer is responsible to cover bleisure as part of employee Duty of Care will amplify in 2020
- 8 **Millennials and Generation Z** entering the workplace with different preferences, expectations and attitudes to risk, will continue to challenge businesses to evolve their risk strategies
- 9 **High profile Duty of Care legal cases** will increase in 2020
- 10 **Start-ups and SMEs** that are under-resourced and inexperienced will struggle to meet Duty of Care obligations in 2020



---

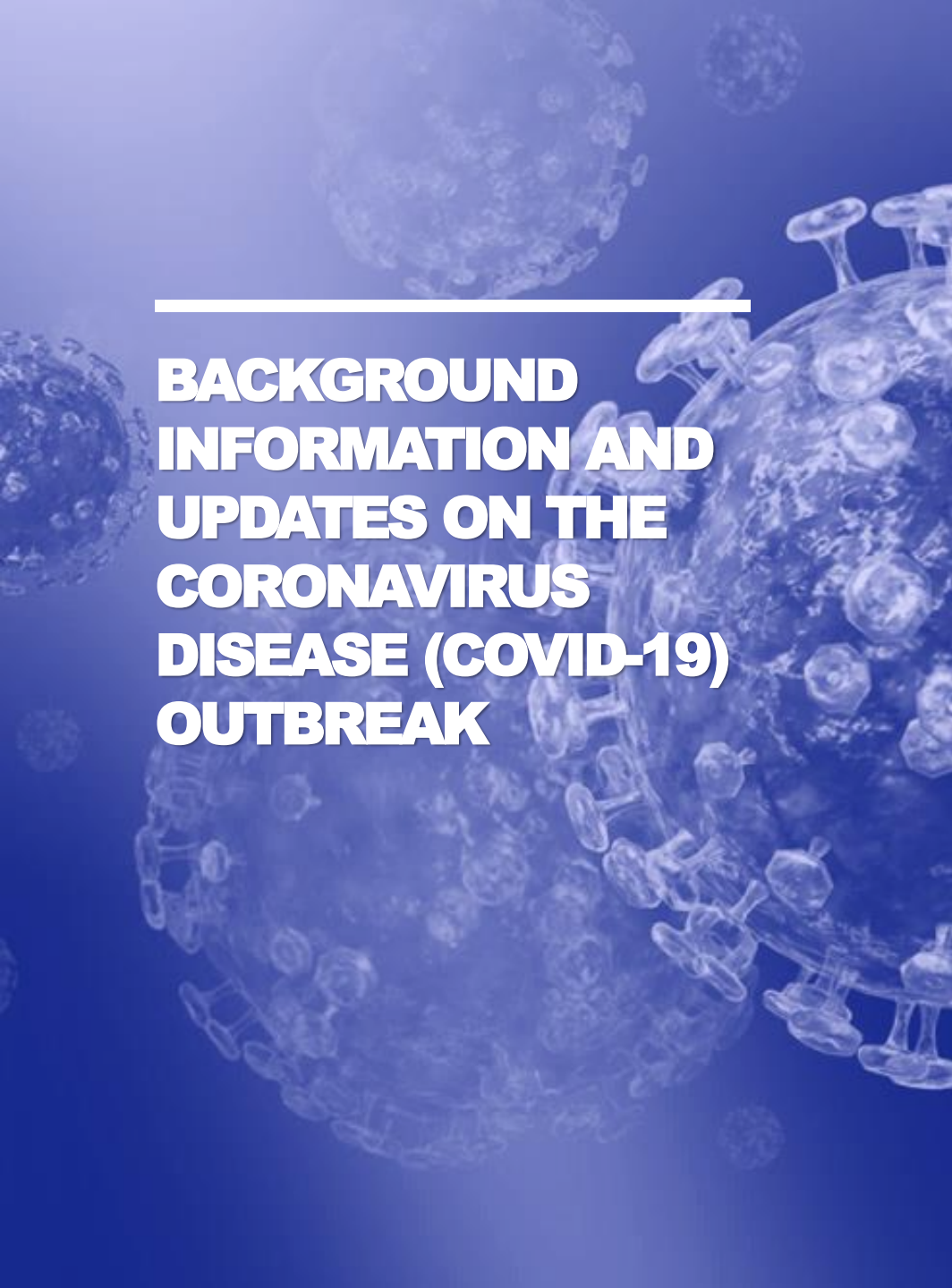
**INFECTIOUS DISEASE  
OUTBREAKS WILL INCREASE  
IN 2020 DUE TO THE IMPACT  
OF MULTIPLE FACTORS  
INCLUDING CLIMATE  
CHANGE, INCREASING  
URBANISATION,  
DIMINISHING VACCINATION  
COVERAGE, AND SECURITY  
INSTABILITY**



**“ You’ve got climate change, leading to the expansion of vector-borne diseases... malaria and dengue coming into the US now and spreading into ranges where it hasn’t been for hundreds of years. ”**

**Travel Risk Management Council**





---

## BACKGROUND INFORMATION AND UPDATES ON THE CORONAVIRUS DISEASE (COVID-19) OUTBREAK



COVID-19 is causing outbreaks of  
**RESPIRATORY INFECTION.**

Some cases are **MILD**, but some are  
**SEVERE** and can be lethal.

It is likely to be spread through respiratory  
droplets containing the virus from a person's  
coughs and sneezes.

**VIRUS NAME:** SARS-CoV-2

**ILLNESS NAME:** COVID-19

Number of cases: 80,146

Number of deaths: 2,699



# BUSINESS CONTINUITY



Wash hands  
frequently



Carry hand  
sanitizer



Cover  
mouth/nose  
when coughing/  
sneezing with  
tissue



Wear mask  
if mandated



Travel  
based on  
company  
risk  
tolerance



Access the  
latest  
updates



---

# SECURITY MEASURES FOR BUSINESS CONTINUITY



Recent  
activities



Transport  
and  
mobility



Forward looking  
triggers and  
scenarios

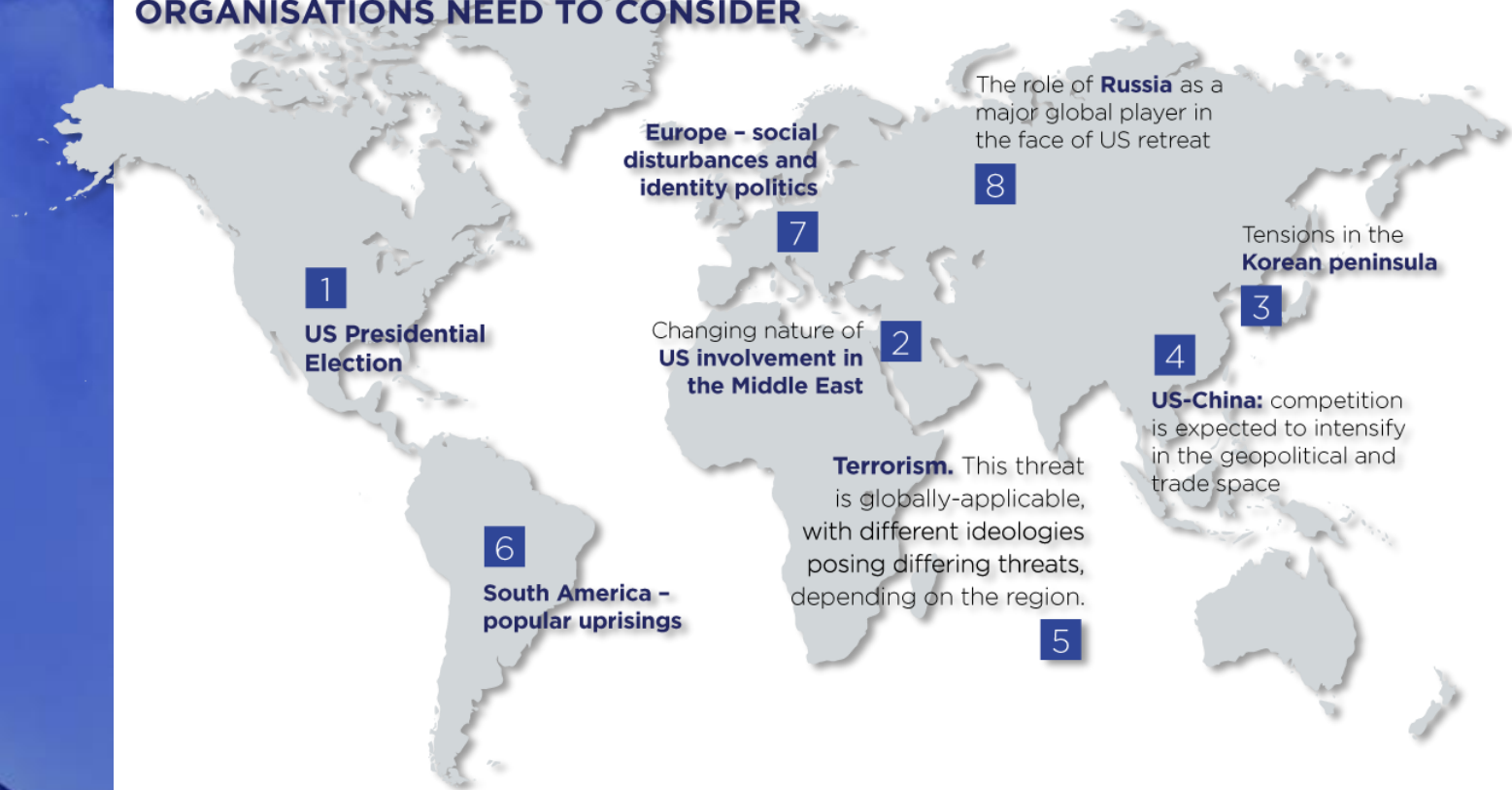




# RISKS BORNE FROM GEOPOLITICAL SHIFTS WILL BE THE MOST IMPORTANT MOBILITY CHALLENGE FOR BUSINESSES IN 2020



## GEOPOLITICAL SHIFTS IN 2020 THAT ORGANISATIONS NEED TO CONSIDER





# CLIMATE CHANGE WILL EXACERBATE THE OCCURRENCE OF ENVIRONMENTAL DISRUPTIONS IN 2020

51%

Half of organisations (51%) believe that natural disasters will be among the most likely causes of modified itineraries in 2020.

## NATURAL DISASTERS AND EXTREME WEATHER EVENTS WHERE INTERNATIONAL SOS SUPPORTED IMPACTED ORGANISATIONS (2017-2019)



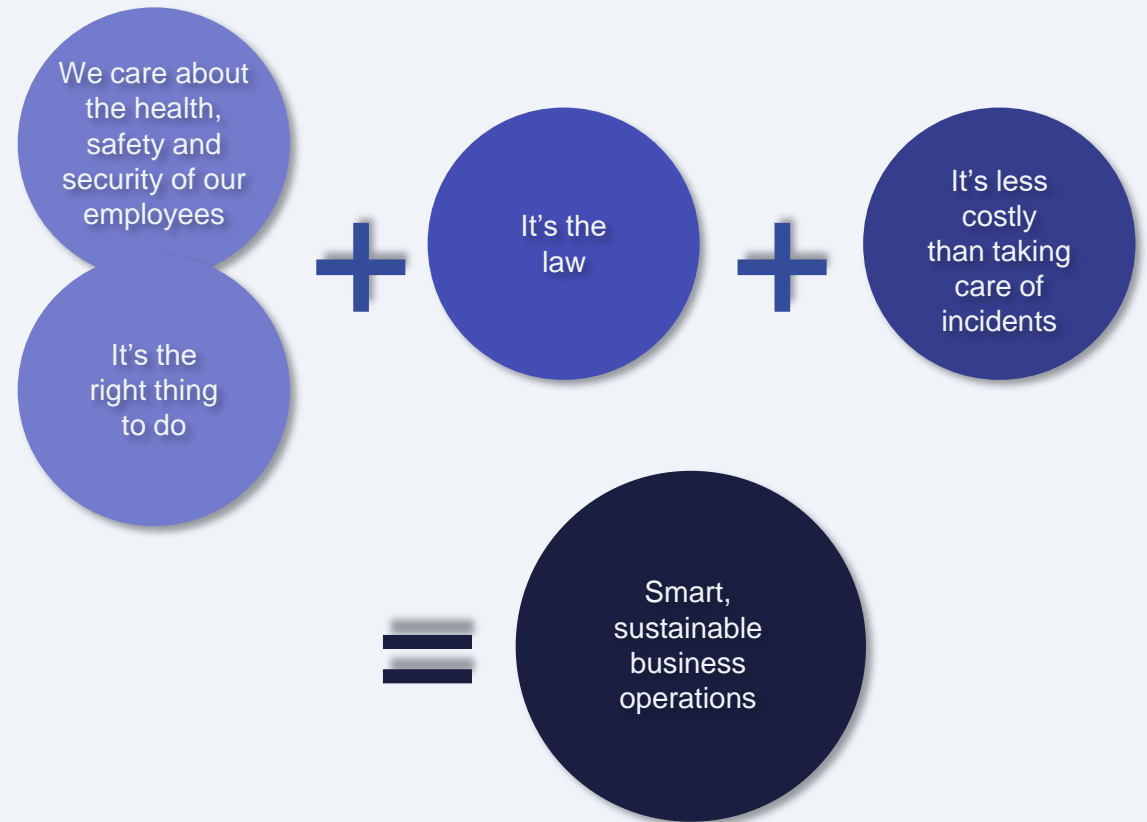


---

**INDABA  
CONFERENCE WAS  
FEBRUARY 3 – 6  
IN CAPE TOWN,  
SOUTH AFRICA**



# START-UPS AND SMES THAT ARE UNDER-RESOURCED AND INEXPERIENCED WILL STRUGGLE TO MEET DUTY OF CARE OBLIGATIONS IN 2020





# TEN PREDICTIONS FOR 2020

## Prevention

- 1 **Risks borne from geopolitical shifts** will be the most important mobility challenge for businesses in 2020
- 2 **Mental health** issues will increase in importance in 2020
- 3 **Physical health:** organisations will be more proactive in safeguarding physical health in 2020

## Protection

- 4 **Cybercrime** is likely to grow and be an increasing risk to security in 2020 physical health in 2020
- 5 **Climate change** will exacerbate the occurrence of environmental disruptions in 2020
- 6 **Infectious disease outbreaks** from established and newly emerging pathogens will increase in 2020 due to multiple factors, including climate change, increasing urbanisation, diminishing vaccination coverage and security instability

## Productivity

- 7 **'Bleisure travel':** the debate whether an employer is responsible to cover bleisure as part of employee Duty of Care will amplify in 2020
- 8 **Millennials and Generation Z** entering the workplace with different preferences, expectations and attitudes to risk, will continue to challenge businesses to evolve their risk strategies
- 9 **High profile Duty of Care legal cases** will increase in 2020
- 10 **Start-ups and SMEs** that are under-resourced and inexperienced will struggle to meet Duty of Care obligations in 2020

# CONTACT US

[internationalsos.com/trm](https://internationalsos.com/trm)

